

# Live cell fluorescence-based phagocytosis assay using CELENA® X High Content Imaging System

## KEYWORDS

RAW 264.7 cells, *E. coli*, pHrodo™ Green, phagocytosis assay, high content imaging, high content analysis

### Key features

- High throughput screening (HTS) of phagocytosis with the CELENA® X High Content Imaging System
- The optimized analysis pipeline used to evaluate phagocytosis of pHrodo™ Green labeled *E. coli* over time

## INTRODUCTION

Phagocytosis, simply put, is a process by which certain live cells, called phagocytes internalize foreign matter. This defensive reaction against infection is key in the study of immunology and plays an important role in immune responses, tissue homeostasis, and continuous clearance of apoptotic cells. Generally, phagocytotic activity is assayed using flow cytometry. However, this process only provides quantitative data and does not provide the means to monitor phagocytosis in real time. Here, we demonstrate the ability of the CELENA® X High Content Imaging System to monitor and quantify phagocytosis using pH-sensitive fluorescent particles, pHrodo™ Green.

## APPLICATION

### Cell preparation

RAW 264.7 cells were counted using the LUNA-II™ Automated Cell Counter and seeded at a density of  $1 \times 10^4$  cells/50 $\mu$ L/well in a half area 96-well plate overnight. Nuclei were counterstained with Hoechst 33342 (Life Technologies, H3570) for laser autofocus. Cells were washed twice using the cell culture media to remove excess dye before imaging.

### Imaging and analysis

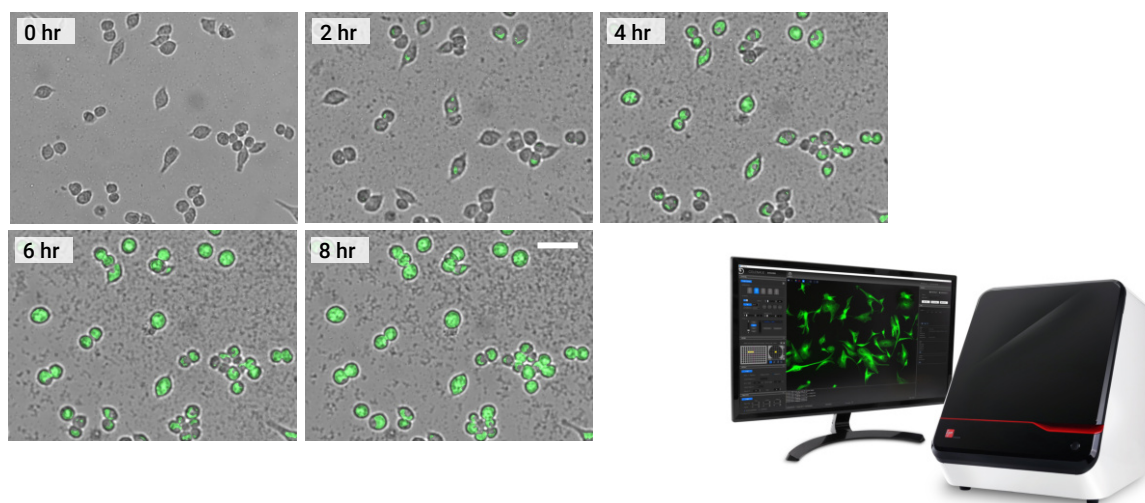
Phagocytic activity was assayed by measuring the increase in fluorescence of RAW 264.7 cells over time after incubation with pHrodo™ conjugated *E. coli* (green). The use of pHrodo™ Green reduces signal variability and improved timing in sensitive experiments. In addition, fluorescence of the pHrodo™ Green dye dramatically increases as pH decreases from neutral to acidic making it an excellent tool for the study of phagocytosis. Imaging and analysis were performed using the CELENA® X High Content Imaging System, CELENA® X Cell Analyzer software, and the CX Stage Top Incubator Pro [Tokai] (95% humidity, 5% CO<sub>2</sub>, and 37°C). Time lapse image acquisition was performed at T0 (time point) and then at 30-minute intervals for 20 hours. Prior to starting live-cell imaging, the cell culture media was replaced with the fresh media containing 10  $\mu$ g, 3  $\mu$ g, and 0  $\mu$ g of pHrodo™ Green conjugated *E. coli* (catalog number P35366; Life Technologies). Live-cell imaging started immediately after replacing the media. Images were captured using an Olympus 10X LWD high NA objective and an EGFP filter cube (Ex470/30, Em530/50).

To quantify phagocytic activity over time, we measured the area and level of green fluorescence occupied by bright green fluorescence. Objects containing green fluorescence were identified using the 'IdentifyPrimaryObjects' module. The area of fluorescence was measured using the 'MeasureImageAreaOccupied' module (Table 1).

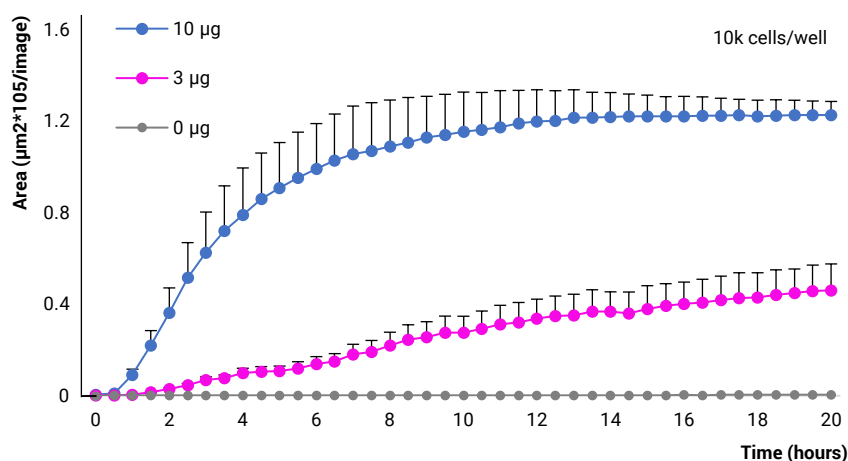
To visualize the data, the 'MaskImage' module was used to eliminate areas of low signal. The 'GrayToColor' module was used to convert the grayscale images to color images (Figure 1).

**Table 1.** Description of the pipeline used to assess phagocytosis with CELENA® X Cell Analyzer

Order	Module	Use
1	<i>IdentifyPrimaryObjects</i>	Detects green fluorescing pHrodo™ bioparticles
2	<i>MeasureImageAreaOccupied</i>	Measures area occupied by fluorescing pHrodo
3	<i>MaskImage</i>	Eliminates cells with light levels below background
4	<i>GrayToColor</i>	Produces color images from gray scale



**Figure 1.** Time-lapse images acquired using CELENA® X system. The area occupied by bright green fluorescence increased over time (scale bar: 50 µm).



**Figure 2.** Quantification of phagocytosis. The area occupied by *E. coli* bioparticles with high GFP signal was measured. Phagocytosis was dependent on the quantity of *E. coli* bioparticles.

## CONCLUSION

In this study, we analyzed phagocytic activity against pHrodo conjugated *E. coli* bioparticles using the CELENA® X High Content Imaging System. Images were automatically taken and analyzed to identify objects, measure area, and apply colors to images for visualizing data. Phagocytic activity increased with a higher quantity of *E. coli* bioparticles as shown in Figure 1 and 2. Establishing the analysis pipeline was simple and straightforward. Overall, the CELENA® X High Content Imaging System, CELENA® X Cell Analyzer software, and CX Stage Top incubator proved to be an effective and efficient system for quantifying and monitoring phagocytotic activity.

## REFERENCES

- Flannagan, R.S., V. Jaumouille, and S. Grinstein, *The cell biology of phagocytosis*. Annu Rev Pathol, 2012. 7: p. 61-98.
- Pluddemann, A., S. Mukhopadhyay, and S. Gordon, *The interaction of macrophage receptors with bacterial ligands*. Expert Rev Mol Med, 2006. 8(28): p. 1-25.
- Agramonte-Hevia, J., et al., *Gram-negative bacteria and phagocytic cell interaction mediated by complement receptor 3*. FEMS Immunol Med Microbiol, 2002. 34(4): p. 255-66.
- Wright, S.D. and M.T. Jong, *Adhesion-promoting receptors on human macrophages recognize Escherichia coli by binding to lipopolysaccharide*. J Exp Med, 1986. 164(6): p. 1876-88.
- Wong, C.O., et al., *Lysosomal Degradation Is Required for Sustained Phagocytosis of Bacteria by Macrophages*. Cell Host Microbe, 2017. 21(6): p. 719-730 e6.